



Working With Male Victims of Sexual Abuse

Sponsored By:
Every Woman's Centre
Sydney, Nova Scotia
May 4, 2015

Robert S. Wright, MSW, RSW
www.robertswright.ca

Who is Robert S. Wright?

A Sociologist and Social Worker

Private Practitioner, Direct Practice and Forensics

Clinical Member, ATSA

Former Long-time Child Welfare Professional

Former Correctional Mental Health Worker , WS Penn.

Former Exec. Dir., Child & Youth Strategy of Nova Scotia

Facilitator of ManTalk

PhD Student in Sociology – Race, Identity, Power



Robert S. Wright, MSW, RSW
www.robertswright.ca

Agenda

- 9:00am Introductions
- 9:15am Why work with Men – Reflection and Discussion
- 9:30am Why work with Men - Presentation
- 10:30am Break
- 10:45am Understanding Trauma, Gender Role Strain and Patterns of Male Sexual Violence
- 12:00pm Lunch
- 1:00pm Recurrent Themes in Treatment
- 1:45pm Assessing Readiness by Asking 4 Questions
- 2:15pm The Sexual Assault Strategy & Final Considerations

Why Work with Male Victims

- Pair up and discuss the following questions:
- What motivates me to (want to) work with male victims?
- What is the most important thing I need to take away from this session?

Agenda

- 9:00am Introductions
- 9:15am Why work with Men – Reflection and Discussion
- 9:30am Why work with Men - Presentation
- 10:30am Break
- 10:45am Understanding Trauma, Gender Role Strain and Patterns of Male Sexual Violence
- 12:00pm Lunch
- 1:00pm Recurrent Themes in Treatment
- 1:45pm Assessing Readiness by Asking 4 Questions
- 2:30pm Break (maybe)
- 2:45pm The Sexual Assault Strategy & Final Considerations

Robert S. Wright, MSW, RSW
www.robertswright.ca



We have some serious problems going on . . .

Robert S. Wright, MSW, RSW
www.robertswright.ca



Increasing income disparity

Robert S. Wright, MSW, RSW
www.robertswright.ca



Economic and demographic pressures

Robert S. Wright, MSW, RSW
www.robertswright.ca




Poverty and homelessness

Robert S. Wright, MSW, RSW
www.robertswright.ca



Crime and violence in disturbing patterns

Robert S. Wright, MSW, RSW
www.robertswright.ca



Sexual violence, cyber facilitated bullying

Robert S. Wright, MSW, RSW
www.robertswright.ca



To make progress we need all hands on deck

Robert S. Wright, MSW, RSW
www.robertswright.ca



Boys and Men are in Bad Shape

Robert S. Wright, MSW, RSW
www.robertswright.ca



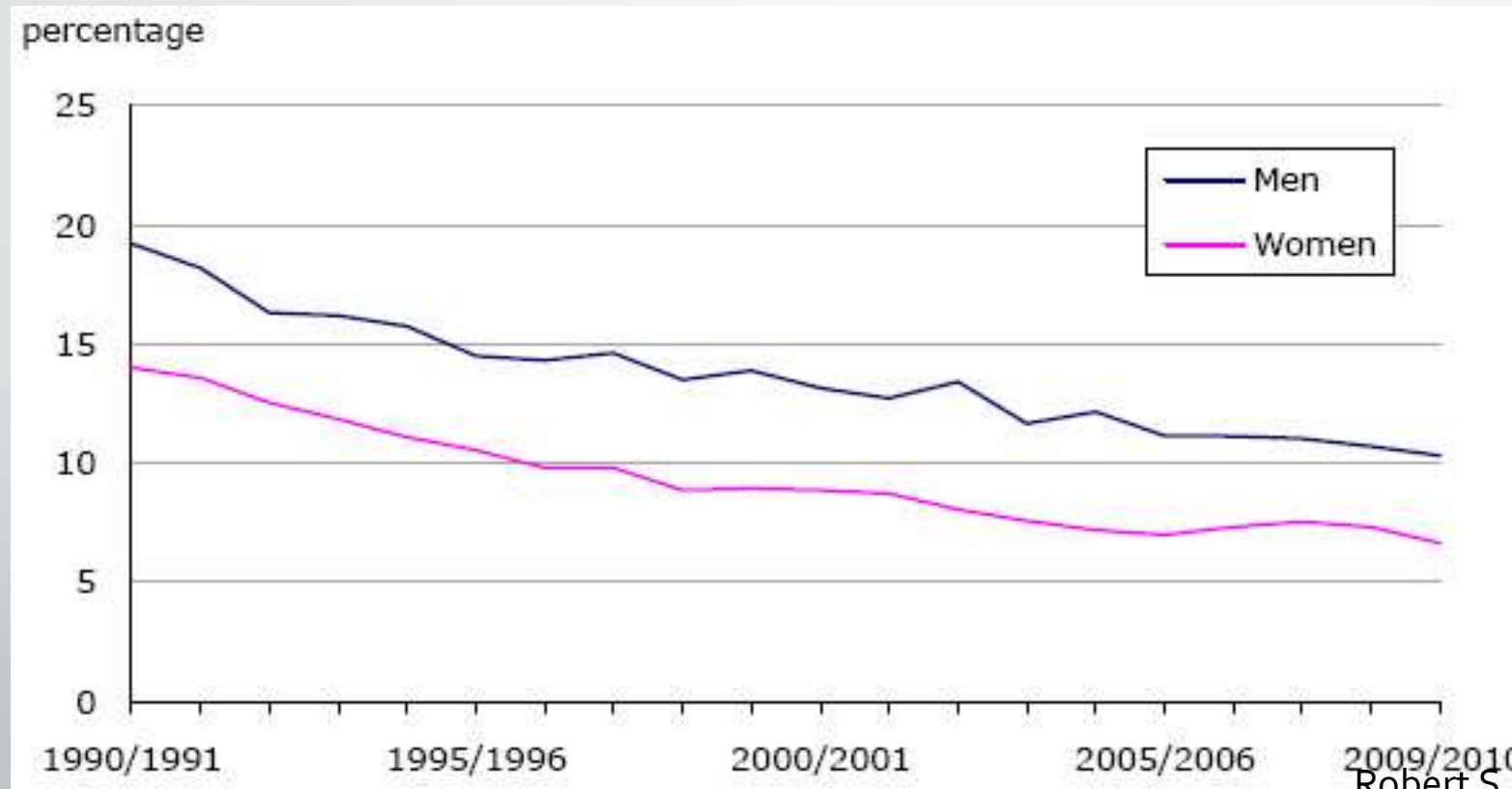
Men Die Younger Than Women

(life expectancy of 79 vs 83)

Robert S. Wright, MSW, RSW
www.robertswright.ca

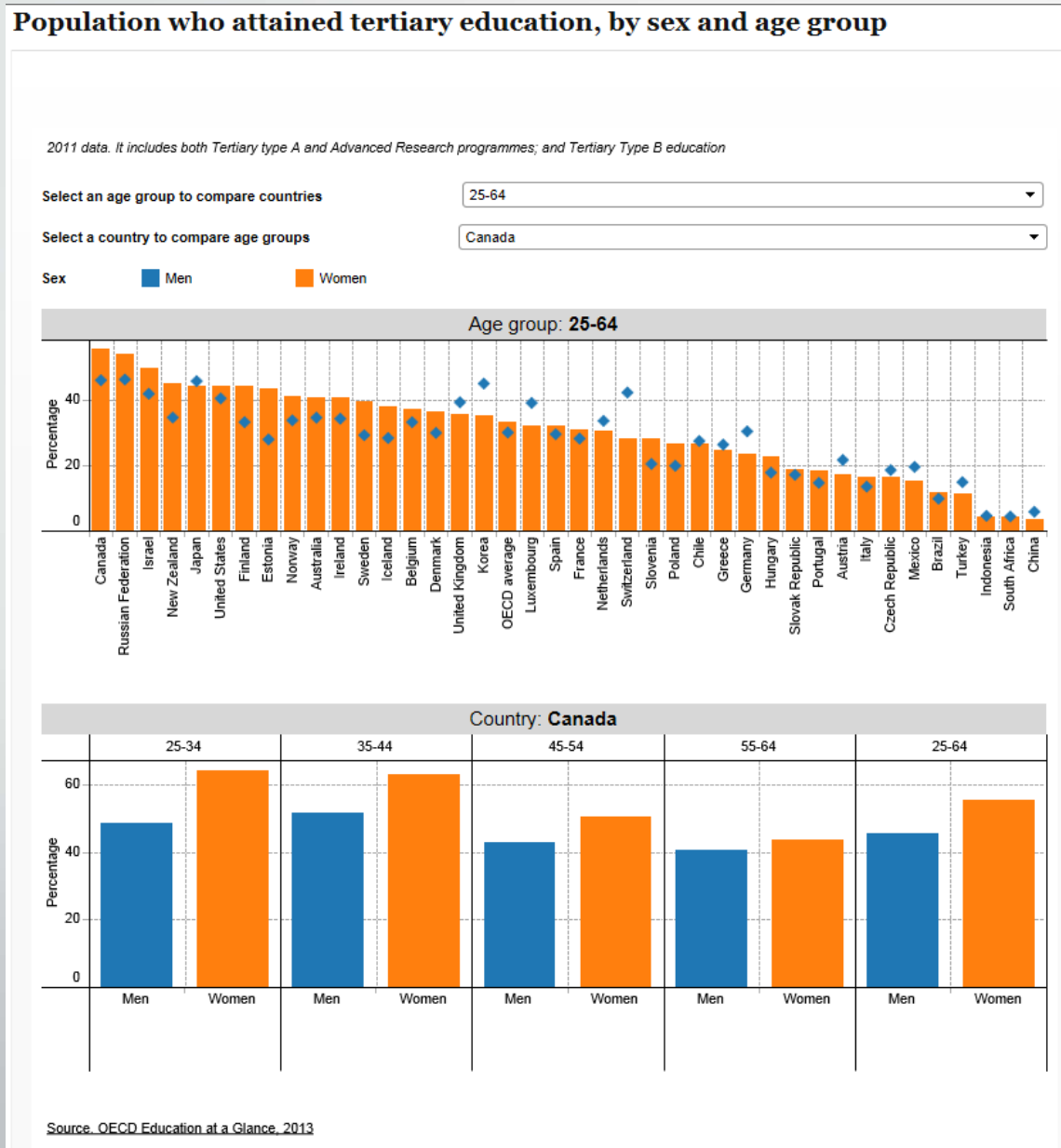
Men Have Higher Dropout Rates Than Women

(Dropout rate, population aged 20 to 24,
by sex, 1990/1991 to 2009/2010. StatsCan)



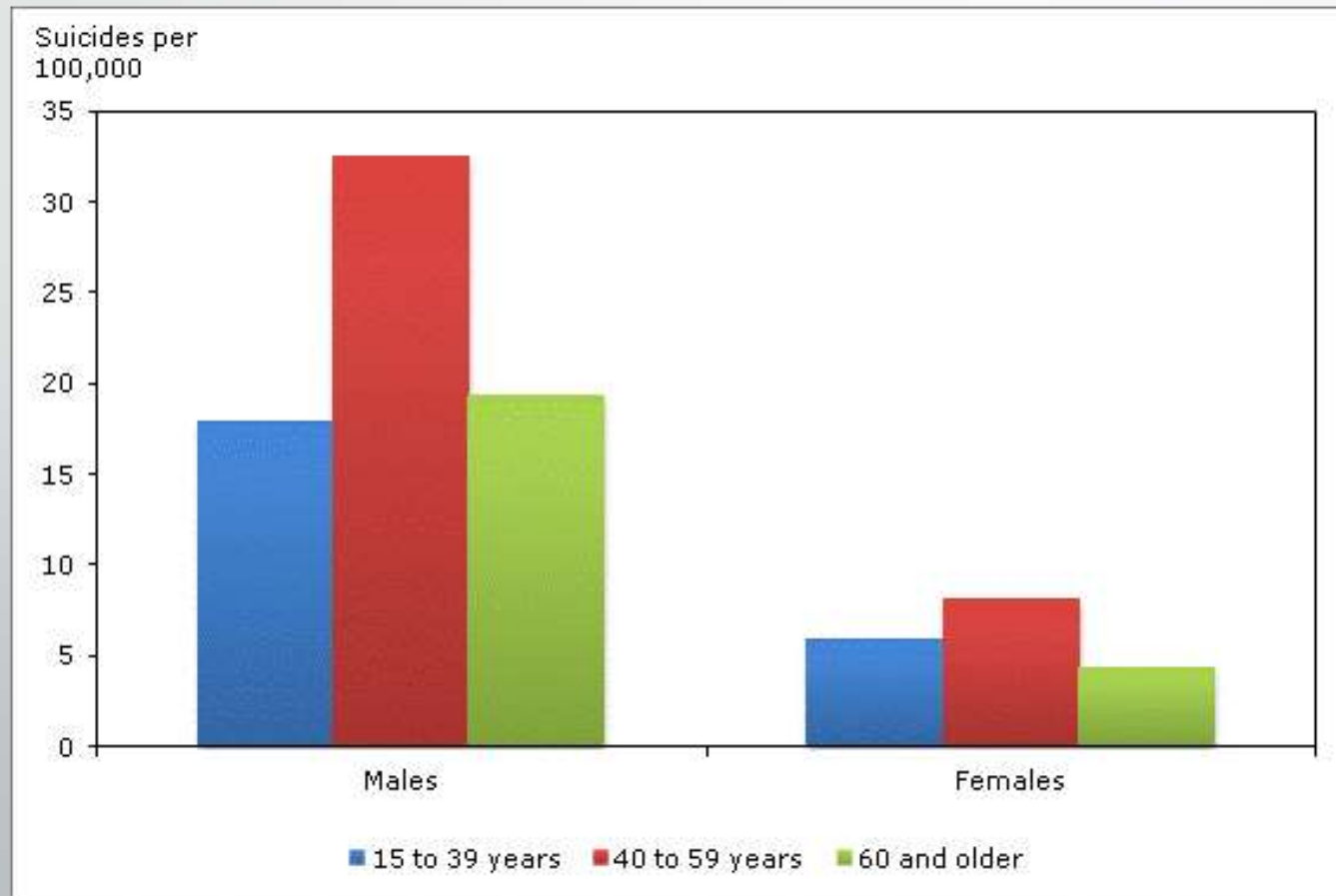
Robert S. Wright, MSW, RSW
www.robertswright.ca

Men Have Lower Rates of Attaining Tertiary Education



Robert S. Wright, MSW, RSW
www.robertswright.ca

Men die by suicide at a rate
3 times higher than women
(Suicides per 100,000, by age group and sex,
Canada, 2009. StatsCan)



Robert S. Wright, MSW, RSW
www.robertswright.ca




Men make up 90% of total admittances to
custody in Canada

Robert S. Wright, MSW, RSW
www.robertswright.ca



Boys and Men are in Bad Shape . . .

Robert S. Wright, MSW, RSW
www.robertswright.ca



. . . And we seem to have
no clue how to help them

Robert S. Wright, MSW, RSW
www.robertswright.ca




Robert S. Wright, MSW, RSW
www.robertswright.ca

The measure of victimization experience and
trauma symptomatology among protective custody inmates at
Washington State Penitentiary:
Implications for returning persons to general population
Robert S. Wright
(Last updated on 5/28/97)

Robert S. Wright, MSW, RSW
www.robertswright.ca

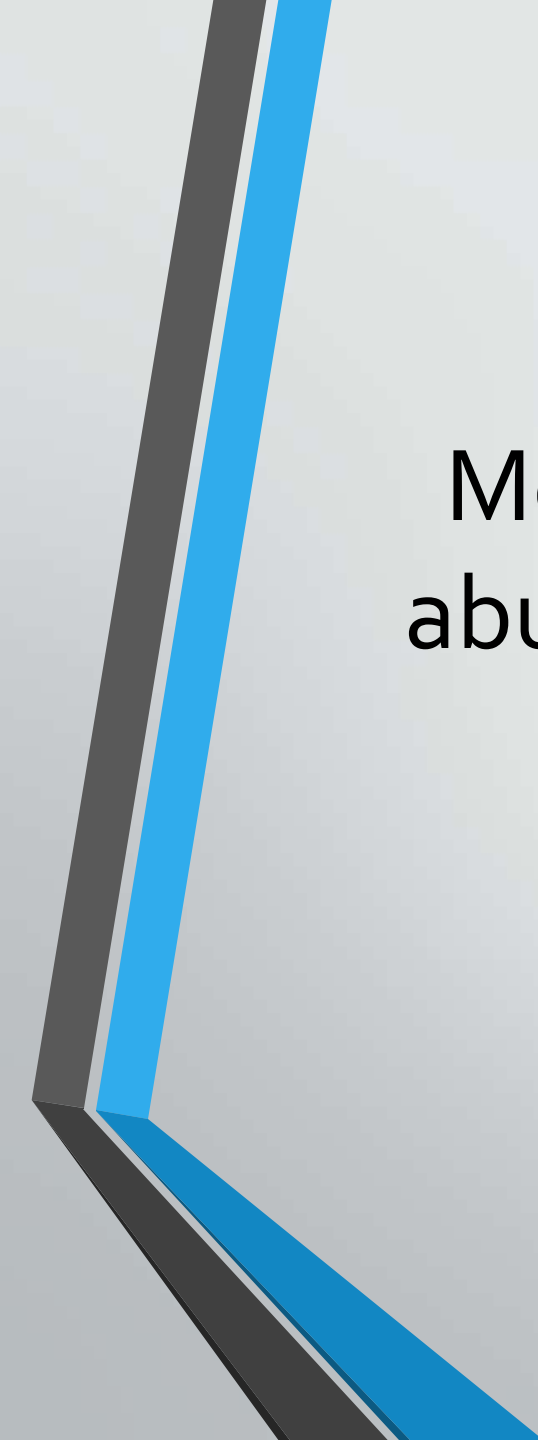
Johnny's Story

- 21 year old man on PC Range for SA, and host of other charges from 1 incident
- Attended treatment as a diversion until I “fired him” as a client
- After detailed sexual history was able to make connections between victimization and perpetration
- Revelation: “I don’t think I’ve ever truly had consensual sex”
- Transitioned speedily into offender treatment and transfer



“Almost equal proportions of men and women had been the victims of intimate partner physical and psychological abuse.” GSS 1999

Robert S. Wright, MSW, RSW
www.robertswright.ca



Men are more frequently victims of sexual abuse than we once thought, yet report less frequently than women and receive little treatment

Robert S. Wright, MSW, RSW
www.robertswright.ca




Police Reported SA rate female victimization
10x that of men

GSS Reported SA rate female victimization
5x that of men

Field Researchers suggest female rate of
victimization is 2x that of men

What is the actual rate?




So what?!

Robert S. Wright, MSW, RSW
www.robertswright.ca




To make progress we need all hands on deck

Robert S. Wright, MSW, RSW
www.robertswright.ca



Addressing men's problems is key to engaging men as healthy, whole citizens as partners in solving our shared problems

Robert S. Wright, MSW, RSW
www.robertswright.ca



As the Province of Nova Scotia advances a
Provincial Sexual Assault Strategy
the needs and experiences of boys and men
need to be included in the discourse

Robert S. Wright, MSW, RSW
www.robertswright.ca

Agenda

- 9:00am Introductions
- 9:15am Why work with Men – Reflection and Discussion
- 9:30am Why work with Men - Presentation
- 10:30am Break
- 10:45am Understanding Trauma, Gender Role Strain and Patterns of Male Sexual Violence
- 12:00pm Lunch
- 1:00pm Recurrent Themes in Treatment
- 1:45pm Assessing Readiness by Asking 4 Questions
- 2:15pm The Sexual Assault Strategy & Final Considerations



Understanding Trauma

Gender Role Strain and Male Socialization

Patterns of Male Victimization

Robert S. Wright, MSW, RSW
www.robertswright.ca

Patterns of Male Victimization

- Inappropriate sexual play of children and siblings left unchecked
- Sexual exploitation of gay and questioning boys
- Sexualized bullying among teen boys
- Clerical/Religious sexual abuse of boys
- Hazing and “frat boy” sexualized violence
- Prison and institutionalized sexual violence

Agenda

- 9:00am Introductions
- 9:15am Why work with Men – Reflection and Discussion
- 9:30am Why work with Men - Presentation
- 10:30am Break
- 10:45am Understanding Trauma, Gender Role Strain and Patterns of Male Sexual Violence
- 12:00pm Lunch
- 1:00pm Recurrent Themes in Treatment
- 1:45pm Assessing Readiness by Asking 4 Questions
- 2:15pm The Sexual Assault Strategy & Final Considerations

Recurring Themes in Treatment

- Understanding Trauma and Recovery
- The Aftermath of Trauma
- Handling Stress & Crises (Managing and Understanding Triggers)
- Trauma, Sex and Relationships
- Trauma & Identity Abuse
- Emotions & Trauma (Anger and Shame)
- Healing as a Developmental Process

Assessing Readiness

- Do I see the need for the inclusion of male stories?
- Do I have services that are able and open to serving male victims?
- Do I know the place the needs of male victims will play in the SA strategy?
- Do I have a plan to build capacity to serve the needs of male victims?

What does “Male-Inclusion” look like?

- Including the needs and experiences of men in the SA discourse would simply add additional fuel to the dynamic and evolutionary changes already underway in the field
- Socio-economics, geography, increasing ethno-cultural diversity, disability, LGBTQ . . . The current SA service providers have already been expanding their understanding of the diverse needs of clients

Matthews' Four Propositions

- Inclusivity must
 - Articulate diverse male-centred points of view
 - Support male victims as they search for balance in their struggle to heal
 - Honour and protect female victims' gains and women's leadership in breaking the silence about violence and abuse
 - Envision the empowerment of all stories into a coherent and inclusive perspective that we can collectively and respectfully own and use in the struggle to reduce and eliminate interpersonal violence.

The Path Towards ManTalk

- Tim M. courageous client – got stuck on breaking the silence and group work
- Inspires ManTalk in Fall of 2011 as a closed 8 session group
- Repeats again in Spring of 2012. In Fall of 2012 ManTalk becomes continuous intake twice-monthly group, receives funding from DoH
- Open to adult persons who identify as male
- Includes some pro-bono individual work, including family meetings to “break the silence”, public education, outreach and recently a satellite group MTD180

ManTalk's greatest accomplishments

- Established a pro-bono service to male victims
- Has been continuous since 2012 except for storm interruptions
- Men have contributed male voice significantly to current provincial discourse
- Have created a space for men without the misogynist lining which can plague such work
- Open acceptance by other SA service providers locally and provincially
- Has served a diversity of men ANS, trans persons, diverse SES, queer and straight
- Training ground for interns and associates

Robert S. Wright, MSW, RSW
www.robertswright.ca

ManTalk's Greatest Challenges

- Restricted heavily by lack of funding or integration into established services*
- Racial diversity is not where it should be
- Creating a safe space for "diversity" often challenges straight and questioning men
- Based in a private practice limits community based ownership

Agenda

- 9:00am Introductions
- 9:15am Why work with Men – Reflection and Discussion
- 9:30am Why work with Men - Presentation
- 10:30am Break
- 10:45am Understanding Trauma, Gender Role Strain and Patterns of Male Sexual Violence
- 12:00pm Lunch
- 1:00pm Recurrent Themes in Treatment
- 1:45pm Assessing Readiness by Asking 4 Questions
- 2:15pm The Sexual Assault Strategy & Final Considerations

Robert S. Wright, MSW, RSW
www.robertswright.ca

SA Strategy

- Pros
 - The province is paying attention to SA
 - Likelihood of movement towards more rational service and funding strategy
 - Establishes SA services as “core services” available everywhere
 - Likelihood of greater inclusion of currently un-told stories and unreached persons
- Cons
 - The Province is paying attention to SA
 - Rational service and funding strategy in the absence of dramatically increased funding will result in winners and losers
 - Danger of “institutionalizing” what has been community based service development and delivery
 - “Everything to everyone” efforts can turn into “very little to anyone” service

Robert S. Wright, MSW, RSW
www.robertswright.ca

Next Steps?

- Consider how to integrate boys' and men's stories into your local discourse
- Participate in provincial SA Strategy evolution

Is Feminism Still Relevant?

- Like anti-oppression, africentricity, queer theory, non-violent civil disobedience, critical race theory and others, feminism is an emancipatory theory that seeks to right injustice and exclusion of a discriminated against segment of society. It is feminism, with its inclusive lens of intersectionality, that has been responsible for much of the progress made in the SA field.
- As male stories begin to be voiced more centrally in the SA discourse I believe we will see that male victimization is fueled in our society by the same forces that are at the root of the oppression of other peoples.
- Until a male-centric, emancipatory theory, with a powerful analysis, model of practice and critical mass of practitioners comes along, feminism seems still to be the most powerful tool in the project to advance the cause of male victims of SA.
- What we have seen from the Men's Rights movement is not a progressive emancipatory voice. The men's liberation movement (whether feminism informed or masculinism informed) has yet to show up as a legitimate foundation for this work.

Robert S. Wright, MSW, RSW
www.robertswright.ca



Working With Male Victims of Sexual Abuse

Sponsored By:
Every Woman's Centre
Sydney, Nova Scotia
May 4, 2015

Robert S. Wright, MSW, RSW
www.robertswright.ca